

Luz del mundo

Álbum para los jóvenes 2020

♩ = 110

Letra y música por Nik Day

Piano introduction in G major, 4/4 time. The right hand features a melodic line with eighth and quarter notes, while the left hand provides a steady accompaniment of eighth notes.

5

5

I. So-mos la

Vocal line (measures 5-8):
5: Rest
6: Rest
7: Rest
8: G4-A4-B4

Piano accompaniment continues with the same pattern as the introduction.

9

9

luz que bri - lla des-de el cie - lo, y nues -
lu - na que da luz de no - che. Nues -

Vocal line (measures 9-12):
9: G4 (quarter), A4 (quarter), B4 (quarter), G4 (quarter), F#4 (quarter), E4 (quarter), D4 (quarter), C4 (quarter)
10: G4 (quarter), A4 (quarter), B4 (quarter), G4 (quarter), F#4 (quarter), E4 (quarter), D4 (quarter), C4 (quarter)
11: G4 (quarter), A4 (quarter), B4 (quarter), G4 (quarter), F#4 (quarter), E4 (quarter), D4 (quarter), C4 (quarter)
12: G4 (quarter), A4 (quarter), B4 (quarter), G4 (quarter), F#4 (quarter), E4 (quarter), D4 (quarter), C4 (quarter)

Piano accompaniment continues.

13

13

tra luz da - re - mos. Nues - tra luz da - re - mos.
tra luz da - re - mos. Nues - tra luz da - re - mos.

Vocal line (measures 13-16):
13: G4 (quarter), A4 (quarter), B4 (quarter), G4 (quarter), F#4 (quarter), E4 (quarter), D4 (quarter), C4 (quarter)
14: G4 (quarter), A4 (quarter), B4 (quarter), G4 (quarter), F#4 (quarter), E4 (quarter), D4 (quarter), C4 (quarter)
15: G4 (quarter), A4 (quarter), B4 (quarter), G4 (quarter), F#4 (quarter), E4 (quarter), D4 (quarter), C4 (quarter)
16: G4 (quarter), A4 (quarter), B4 (quarter), G4 (quarter), F#4 (quarter), E4 (quarter), D4 (quarter), C4 (quarter)

Piano accompaniment continues.

**(Solamente la 2ª estrofa)*



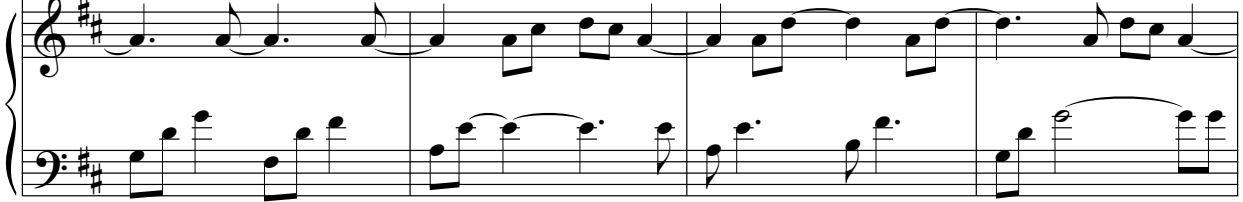
al mun-do_o - fre - ce luz. _____

16



Fuen-te es Él _____ de _____ po - der in - fi - ni - to, _____
Él es el sol _____ que _____ *(al mun-do_o-fre - ce luz.)

16

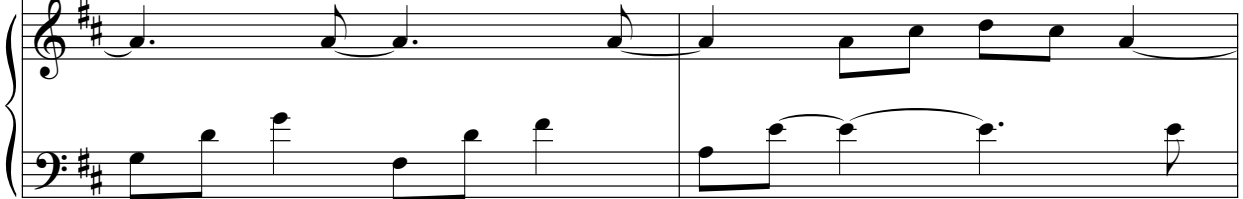


20



y nues - tra luz da - re - mos.
Y nues - tra luz da - re - mos.

20

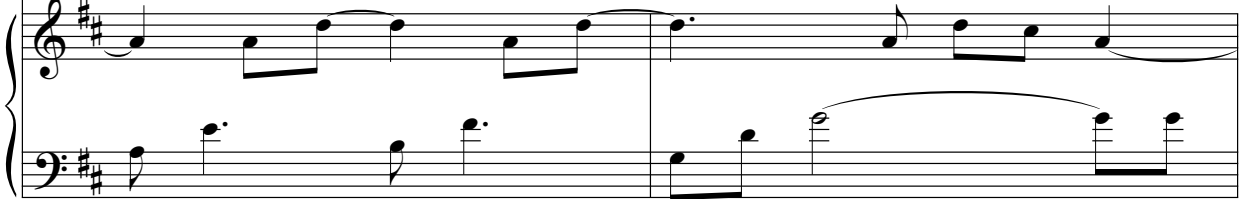


22



Nues - tra luz da - re - mos.
Nues - tra luz da - re - mos.

22

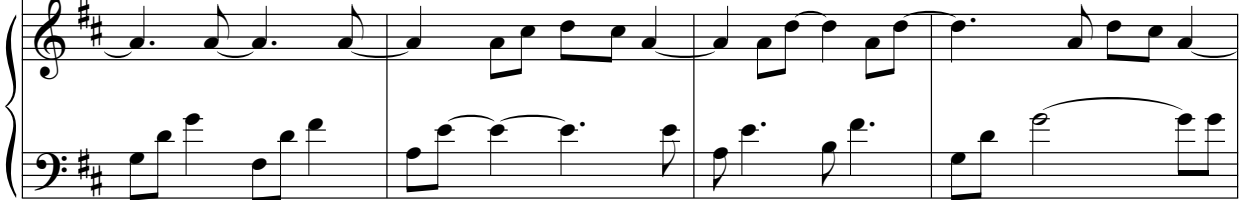


24



Y bri-lla - re - mos _____ co - mo el ra - yo _____ al es - cu - char _____ Su voz,

24



43
8
luz se ex - pán - di - rá. _____ Él es la Luz. _____

43
Piano accompaniment for measures 43-45, featuring a steady eighth-note accompaniment in the right hand and sustained chords in the left hand.

46
8
Del mun-do es la Luz. _____ 1. _____ 2. So - mos la

46
Piano accompaniment for measures 46-48, continuing the eighth-note accompaniment and sustained chords.

49
8
Ahh. _____

49
Piano accompaniment for measures 49-52, featuring a steady eighth-note accompaniment in the right hand and sustained chords in the left hand.

53
8
Oh, _____ oh. _____

53
Piano accompaniment for measures 53-56, continuing the eighth-note accompaniment and sustained chords.

57

8

Él es la Luz. _____ Del mun-do es la Luz. _____

61

8

Bri-lla en ti - nie - blas; _____ nos guí - a con _____ Su a - mor. _____

65

8

Si el co - ra - zón a - bier - to es - tá, _____ bri - lla -

68

8

rá en la os - cu - ri - dad. _____ Él es la Luz. _____

71
8

Del mun-do_es la Luz. _____ Él es la Luz.

74
8

— Oh, oh. _____

77
8

Él es la luz. _____