

## Castelo Forte

*Majestosamente* ♩ = 60-80

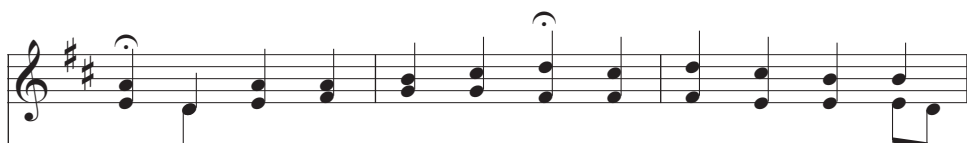
Cas - te - lo for - te é nos - so Deus. É tor - re in - ven -



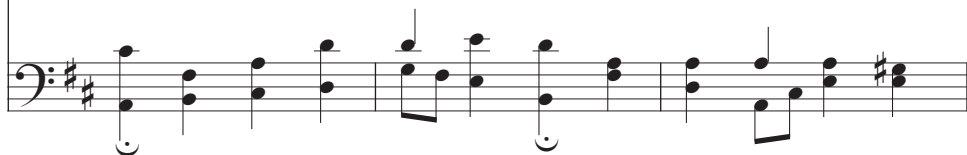
cí - vel. Com for - te mão de - fen - de os seus, Trans -



põe o in - trans - po - ní - vel. O mal so - bre - pu -



jou, Da Que - da nos sal - vou; É gran - de o seu po -



der, Que a tu - do faz vi - ver E pa - ra sem-pre rei - na - rá.

The image shows a musical score for a hymn. It consists of two staves: a treble staff on top and a bass staff on the bottom. The key signature is G major (one sharp, F#). The melody is written in a simple, homophonic style. The lyrics are in Portuguese and are placed between the two staves. The lyrics are: "der, Que a tu - do faz vi - ver E pa - ra sem-pre rei - na - rá." The music ends with a double bar line.

*Letra:* Martinho Lutero, 1483–1546  
*Música:* Attr. a Martinho Lutero

II Samuel 22:2–3  
Salmos 18:1–2