

Un Re nacque a Betleem

Con vigore ♩ = 92-112



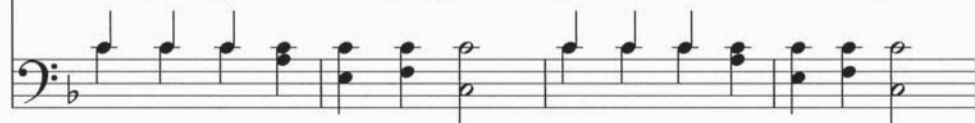
1. Un Re nac - que a Be - tle - em, can - tan gli an - ge - li in cor;
2. Sal - ve al Re che a noi quag - giù por - ta pa - ce e ca - ri - tà,



Re di pa - ce e di bon - tà, che a Dio ci por - te - rà.
lu - ce e vi - ta al mon - do in - ter, so - la vi - a e ve - ri - tà.



In - nal - ziam fe - li - ci un cor, fe - steg - gia - mo il Sal - va - tor,
Con gran glo - ria vien quag - giù, per non far - ci mo - rir più,



u - na lo - de in - to - niam, il So - vra - no a - do - riam.
na - to qua - le Sal - va - tor, per por - tar re - sur - re - zion.



The image shows a musical score for a hymn. It consists of two staves: a treble clef staff at the top and a bass clef staff at the bottom. The key signature is one flat (B-flat). The melody is written in the treble clef, and the bass line is in the bass clef. The lyrics are written between the two staves. The music features a variety of note values, including quarter notes, eighth notes, and chords. There are repeat signs at the beginning and end of the piece. The lyrics are: "Noi con gli an - ge - li e - sul - tiam, na - to è il gran So - vran!"

Testo: Charles Wesley, 1707–1788
Musica: Felix Mendelssohn, 1809–1847

Luca 2:8–14
3 Nefi 25:2