

**The First Presidency:**

Thomas S. Monson,  
Henry B. Eyring,  
Dieter F. Uchtdorf

**The Quorum of the Twelve Apostles:**

Boyd K. Packer, L. Tom Perry,  
Russell M. Nelson, Dallin H. Oaks, M. Russell Ballard,  
Richard G. Scott, Robert D. Hales, Jeffrey R. Holland,  
David A. Bednar, Quentin L. Cook, D. Todd Christofferson,  
Neil L. Andersen

Editor: Spencer J. Condie  
Advisers: Keith K. Hilbig,  
Yoshihiko Kikuchi, Paul B. Pieper

Managing Director:  
David L. Frischknecht  
Editorial Director:  
Victor D. Cave  
Graphics Director:  
Allan R. Loyborg

Managing Editor:  
Richard M. Romney  
Assistant Managing Editor:  
Janet Thomas  
Associate Editors:  
David A. Edwards,  
Paul VanDenBerghe  
Publications Assistant:  
Sally J. Odekirk  
Editorial Intern:  
Jourdan Strain  
Editorial Staff: Susan Barrett,  
Ryan Carr, Jennifer L. Greenwood,  
R. Val Johnson, Adam C. Olson,  
Laurel Teuscher

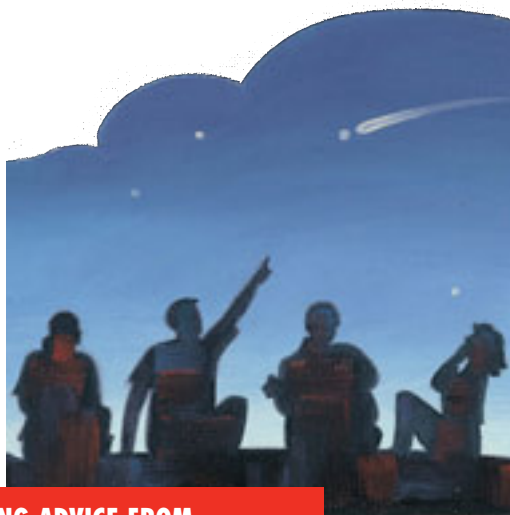
Art Director: Brent Christison  
Senior Designer: Fay P. Andrus  
Design and Production Staff:  
Collette Nebeker Aune, Eric P. Johnsen, Scott M. Mooy, Jane Ann Peters, Scott Van Kampen  
Prepress: Byron Warner

Printing Director:  
Craig K. Sedgwick  
Distribution Director:  
Randy J. Benson

© 2010 by Intellectual Reserve, Inc. All rights reserved. Periodicals Postage Paid at Salt Lake City, Utah. The *New Era* (ISSN 0164-5285) is published monthly by The Church of Jesus Christ of Latter-day Saints, 50 E. North Temple St., Salt Lake City, UT 84150-3220, USA.

POSTMASTER: Send address changes to Distribution Services, Church Magazines, P.O. Box 26368, Salt Lake City, UT 84126-0368, USA.

Canada Post Information:  
Publication Agreement #40017431.



**DATING ADVICE FROM  
PROPHETS AND APOSTLES p. 2**

**Special Issue:  
Dating for Beginners**

“Does he like me?” “Will she say yes?” “Will I make a fool of myself?”

We can’t answer these questions for you, but when it comes to other questions about dating, this issue contains answers to some of the most important ones you’ll face. You’ll find:

- Advice from General Authorities and other Church leaders.
- Answers to frequently asked questions from LDS teens.
- Ideas for great dates.
- And much more.

We hope that this issue will help you steer clear of the pitfalls, look past the sweaty palms, and focus on the fun and friendship that dating offers so that you can prepare for the time when you’ll more seriously consider whom to marry for eternity in the temple.

**The Message:  
Dating Advice from Prophets  
and Apostles 2**

*Listen to Church leaders as they give advice on dating.*

**To the Young Men on Dating,  
Advice to Young Women on Dating 6**

Young Men and Young Women general presidencies  
*The general presidencies of the Young Men and Young Women give guidance to the youth of the Church.*

**Mormonad:  
Look Forward 9**

**Questions and Answers 10**

*“How can I have clean thoughts when I see so much immodesty around me?”*

**What’s the Deal with Boys? . . .  
What’s the Deal with Girls? 12**

*Boys and girls ask each other questions and give each other answers.*

**Is Dating Dead? 18**

*The world says dating is dead, but is that really true?*

**Dating FAQs 20**

*Get answers on just about everything you wanted to know about dating.*

**Stories from General Authorities  
on Dating 33**

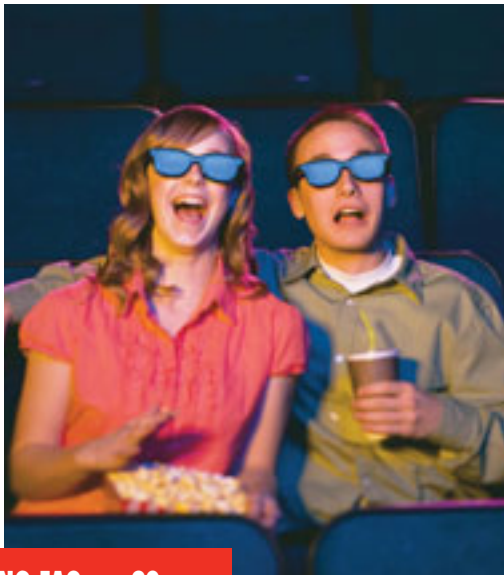
*Three examples related to dating from their own lives.*

**In the Driver’s Seat 34**

Wendy Kenney  
*If you want to make a good impression, ask to meet your date’s parents.*

**UNSTEADY DATING p. 38**





**DATING FAQs p. 20**

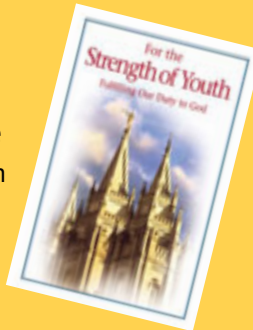
<b>The Extra Smile</b>	<b>37</b>
<b>Unsteady Dating</b>	<b>38</b>
JeaNette G. Smith <i>Teens' dating should be about friendship.</i>	
<b>What Makes a Person Datable?</b>	<b>43</b>
Jourdan Strain <i>Some tips on things to try to improve your datability.</i>	
<b>Instant Messages</b>	<b>44</b>
<i>A dating dilemma; the beauty of holiness; my dad's example.</i>	
<b>Idea List:</b>	
<b>Make a Great Date</b>	<b>46</b>
Julia Woodbury <i>Enjoy these fun and inexpensive dating ideas.</i>	
<b>Poem:</b>	
<b>Walking in the Park</b>	<b>49</b>
Sara Israelsen-Hartley	
<b>Photo</b>	<b>49</b>
Suzanne Steed	

*Text and visual material in the New Era may be copied for incidental, noncommercial church or home use. Visual material may not be copied if restrictions are indicated in the credit line with the artwork. Copyright questions should be addressed to Intellectual Property Office, 50 E. North Temple St., Salt Lake City, UT 84150, USA; e-mail: cor-intellectualproperty@ldschurch.org.*

**WHAT'S ONLINE**

*Would you like to hear more about upholding high dating standards?*

You can find videos with messages from Church leaders and interviews with youth in the For the Strength of Youth section of [Youth.lds.org](http://Youth.lds.org).



*Do you have other questions about dating?* Go to [Youth.lds.org](http://Youth.lds.org) and find the link to the Dating topic page. There you'll find questions and answers, videos, articles, and more. You can also share your own testimony and experiences about how following the teachings of Church leaders on dating has blessed your life.

*What's on the New Era Web page?*

Go to [NewEra.lds.org](http://NewEra.lds.org) to find previous articles on dating, including Q&As, Mormonads, stories from teens, and messages from Church leaders.



**The New Era Magazine**  
**Volume 40, Number 4**  
**April 2010**

*Official monthly publication for youth of The Church of Jesus Christ of Latter-day Saints*

**Editorial Offices:**

New Era  
50 E. North Temple St.  
Rm. 2420  
Salt Lake City, UT 84150-0024,  
USA

**E-mail Address:**

[newera@ldschurch.org](mailto:newera@ldschurch.org)

**To Change Address:**

Send old and new address information to:  
Distribution Services  
P.O. Box 26368  
Salt Lake City, UT 84126-0368,  
USA.  
Please allow 60 days for changes to take effect.

*Cover: In this issue you can find some good tips for beginners on dating.*

*Cover photography: Jerry Garns (front) and Christina Smith (back)*

**TO SUBMIT MATERIAL:**

Send stories, articles, photos, poems, and ideas online at [newera.lds.org](http://newera.lds.org). Click Submit Your Material, and fill in the form. Or e-mail or mail them to the Editorial Offices address above. For return, include a self-addressed, stamped envelope.

**TO SUBSCRIBE:**

**By phone:** Call 1-800-537-5971 to order using Visa, MasterCard, Discover Card, or American Express.  
**Online:** Go to [www.ldscatalog.com](http://www.ldscatalog.com). **By mail:** Send \$8 U.S. check or money order to Distribution Services, P.O. Box 26368, Salt Lake City, UT 84126-0368, USA.

Visit us online at  
[www.NewEra.Lds.org](http://www.NewEra.Lds.org).