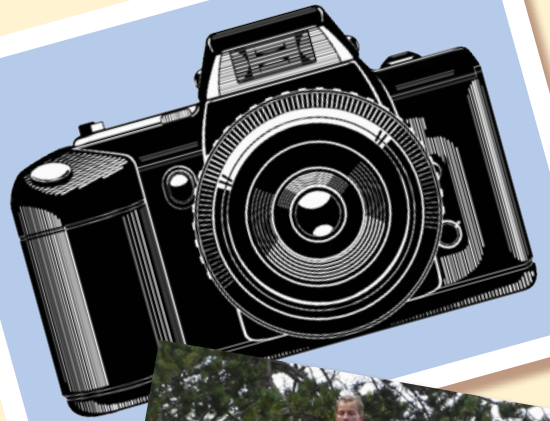


Family History Mystery

Case #4: The Mystery of the Old Photograph

Dear Detective,
Sharpen your searching skills! Ask a parent for a copy of an old family photo. Where and when was it taken? Can you find any stories about the people in the photo? Add the photo and everything you learn about it to your evidence file.



Smart Sleuth Tip:

Some detectives organize photos and clippings on a big board. You can do the same by making your evidence into a collage.



Family History Mystery:

EVIDENCE FILE

MYSTERY SOLVED

Print more tags for your "sleuth kit"
at friend.lds.org.