



January 27–February 2  
1 NEPHI 16–22

# What Did It Take to Build the Ship?

For Nephi, building a ship was no small feat. He had no blueprints, no catalog for ordering materials, and no tools. But he had faith, a strong work ethic, and instructions from the Lord (see 1 Nephi 17:8).

## Discussion

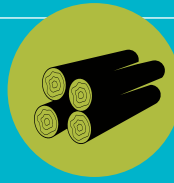
How are faith in the Lord and hard work related?

Like Lehi and Sariah's family journeying to the promised land, what journey are you on as a family?

What work is required to reach your destination?

## Timber

Since timber is not typically found on the coast of the Arabian Peninsula, Nephi probably had to “go forth” (see 1 Nephi 18:1) to the hills to cut timber and painstakingly drag it to the beach. It likely took many trips to get enough wood.



## Tools

To make woodworking tools, Nephi had to find and extract ore—a backbreaking process that includes mining rock for minerals, crushing the rock, and smelting the concentrated minerals together under enormous heat using fire and bellows to forge metal (see 1 Nephi 17:9–11).



## Faith

Nephi had faith that God could dry up the sea if that was His will. But he also had faith that the Lord could help him achieve what seemed impossible (see 1 Nephi 17:50–51).



WEEK

1