

CHARTING THE COURSE FOR

PEACE

PEACE IN JESUS CHRIST IS POSSIBLE DESPITE LIFE'S MANY STORMS.

By Alyssa Nielsen

You've been on the choppy waters of life for some time now, and it can be hard. How are you supposed to steer the ship while adjusting the sails and watching for hurricanes, pirates, icebergs, and rocks? Sometimes your maps are unclear and the stars hidden. (You never could see the Big Dipper.) And yes, you're sea sick.

You crave a peaceful day, smooth waters, and a sandy, sunlit shore in sight. Peace may sound like a mythical isle, but did you know it's real?

Peace comes through comfort from the Holy Ghost and grace through the Atonement of Jesus Christ. So even though wars rage, trials come, and uncertainties abound, peace is possible for you—no matter your current coordinates.

Follow the ships' paths on the next page to help you recognize challenges you might face and some possible choices you can make on the route to peace. Some choices will take you further from peace while others bring you closer.



1

BREAK FREE FROM DOUBT

"We must never allow doubt to hold us prisoner and keep us from the divine love, peace, and gifts that come through faith in the Lord Jesus Christ."

President Dieter F. Uchtdorf, Second Counselor in the First Presidency, "Come, Join with Us," Oct. 2013 general conference.



2

ESCAPE SIN

"Repentance is uplifting and ennobling. It's sin that brings unhappiness. Repentance is our escape route!"

Stephen W. Owen, Young Men General President, Oct. 2017 general conference.

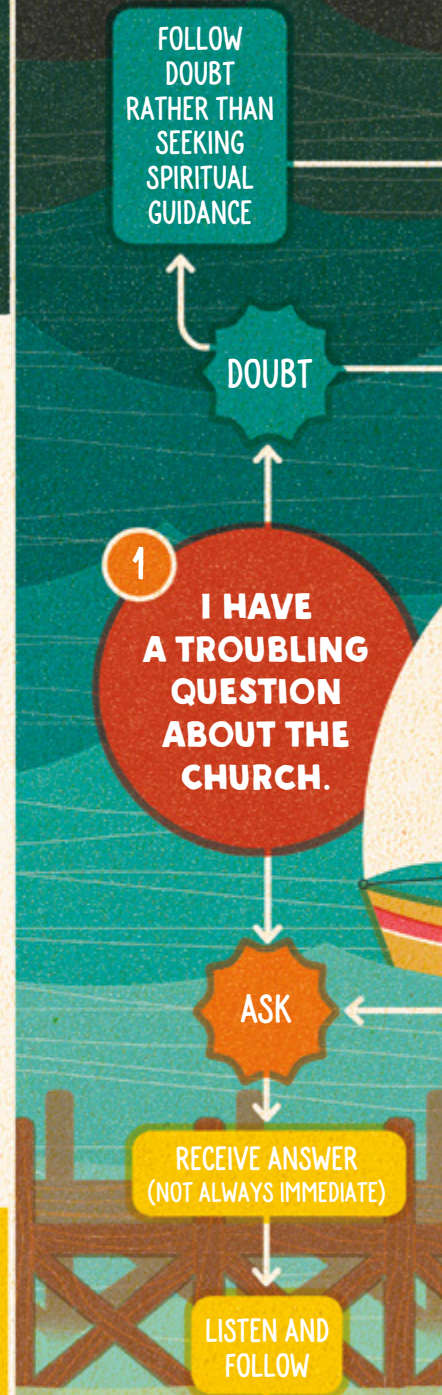


3

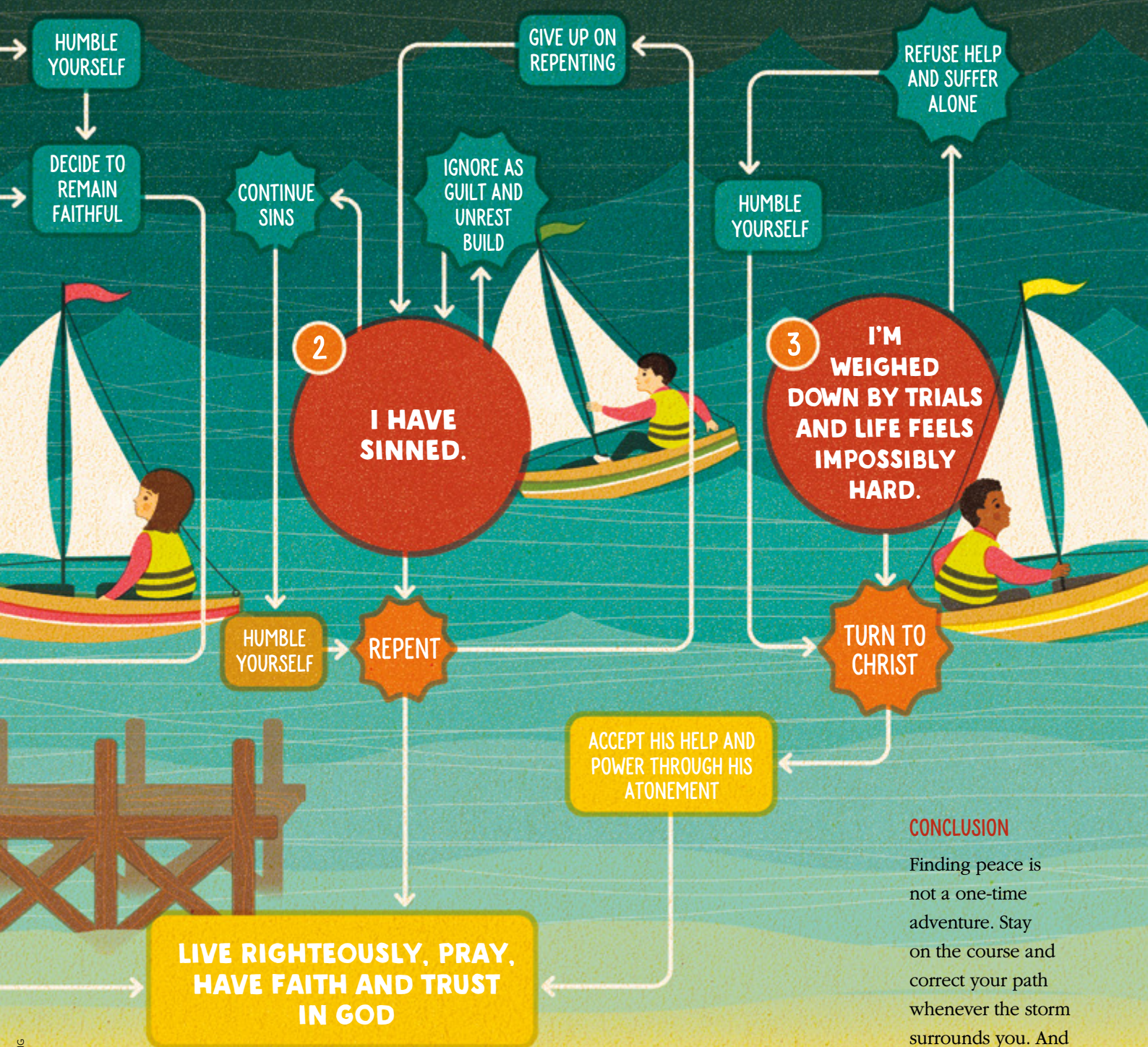
CLAIM THE REWARD

"Even with the trials of life, because of the Savior's Atonement and His grace, righteous living will be rewarded with personal peace."

Elder Quentin L. Cook of the Quorum of the Twelve Apostles, Oct. 2017 general conference.



FEAR



CONCLUSION

Finding peace is not a one-time adventure. Stay on the course and correct your path whenever the storm surrounds you. And always remember the Savior can still the seas (see Mark 4:36–41). **NE**

PEACE