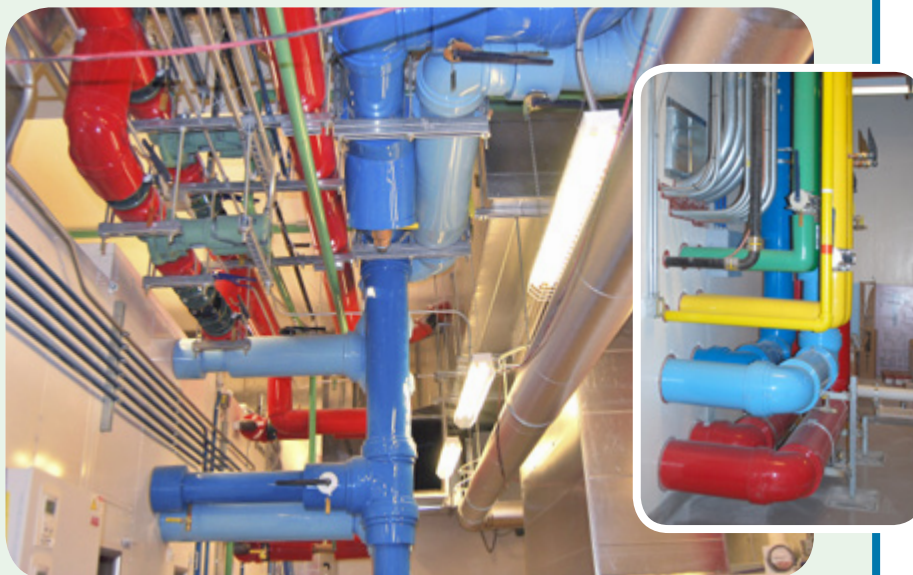


Building a Temple

Join us each month to see how the Payson Utah Temple was built!

By Amie Jane Leavitt

Brightly colored pipes carry water, gas, and electricity through the ceilings and walls of the temple. The different colors show workers what flows inside each pipe. Without all of these behind-the-scenes features, the lights in the temple wouldn't turn on, water wouldn't flow from the faucets, and air conditioning wouldn't cool the rooms.



FUNSTUFF ANSWERS

Page 17: B

Page 31: a thesaurus; John Taylor

Page 35: Down: 2, Oliver; 3, seer; 5, Thummim; 6, Cumorah; Across: 1, wagon; 4, scribe; 7, Whitmer; 8, Lucy; 9, Moroni; 10, Grandin



HIDDEN CTR RINGS

Did you find the rings?
Look on pages FJ8, 16, and 37.

How to Write to the Friend

To send us a letter, drawing, poem, or paper heart...

1. Fill out the form below and send it in with your story or artwork.
2. Send a school picture or other high-resolution photo.
3. We might edit your submission for length or clarity, and we can't return it to you.
4. You must be at least three years old.

The Last Laugh

Big news!
I got some cool birthday presents, but CHECK OUT THE BOXES THEY CAME IN!



Please send your submission to:

Friend Magazine
50 E. North Temple St., Rm. 2393
Salt Lake City, UT 84150-0024
Or email: friend@ldschurch.org

May the Friend contact you with a survey?

Yes No

The following information and permission must be included:

First and last name

Age Boy/Girl State/Province, Country

I give my permission to The Church of Jesus Christ of Latter-day Saints to use my child's submission and photo on the Church websites and social media platforms as well as for Church reports, print products, video, publications, and training materials.

Signature of parent or legal guardian

Email of parent or legal guardian